

"THE CARDIFF III"
IN VICTORIA WOODS
1739 SQ.FT.



FRONT ELEVATION

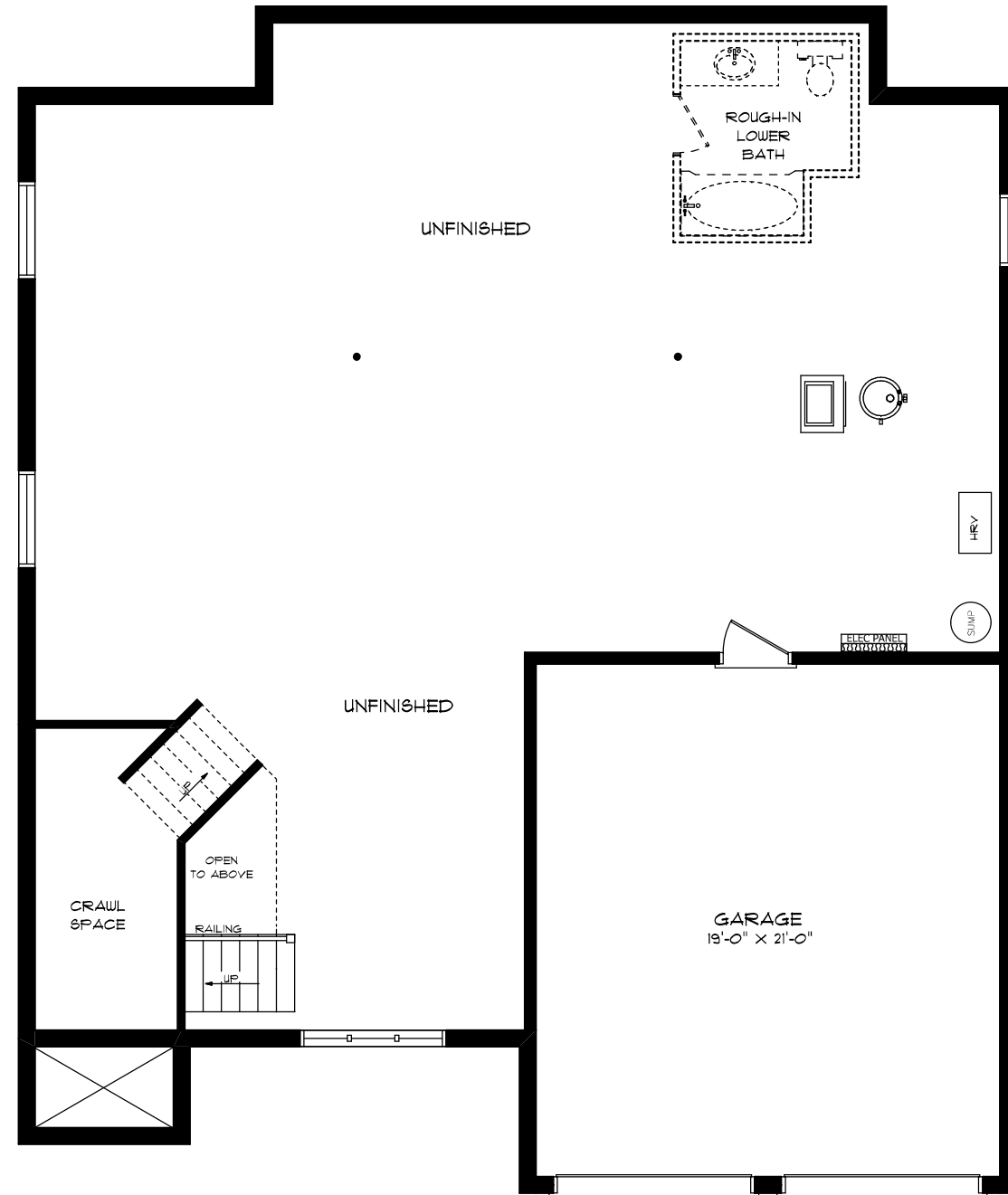


REAR ELEVATION

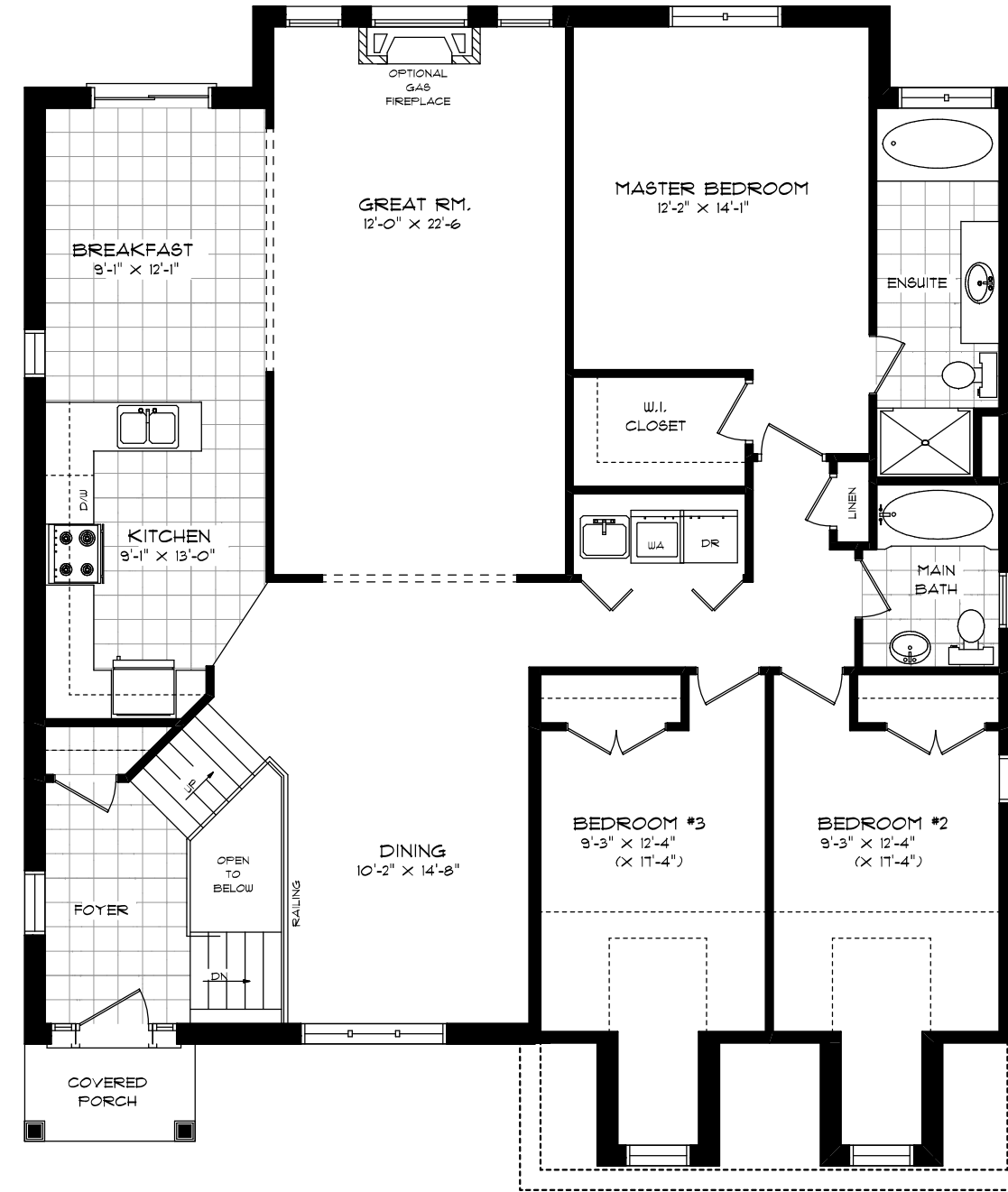
SEELEY
HOMES
CUSTOM HOMES BY SEELEY

"THE CARDIFF III"

IN VICTORIA WOODS
1739 SQ.FT.



FOUNDATION PLAN



FIRST FLOOR PLAN