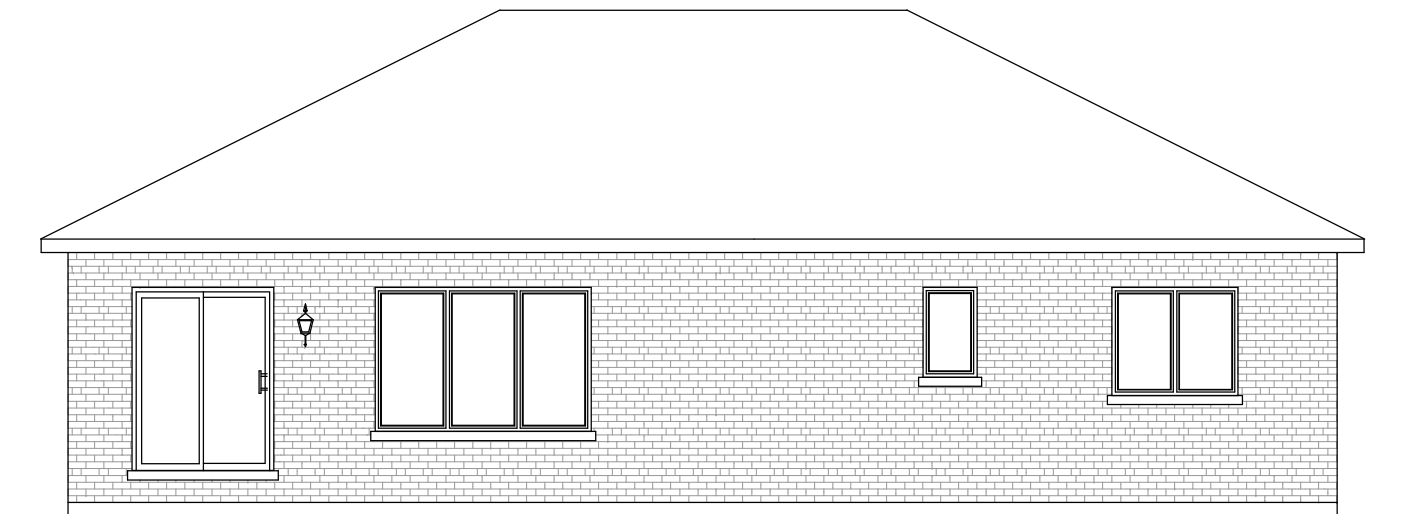


"THE RICHMOND III"
IN VICTORIA WOODS
1462 SQ.FT.



FRONT ELEVATION



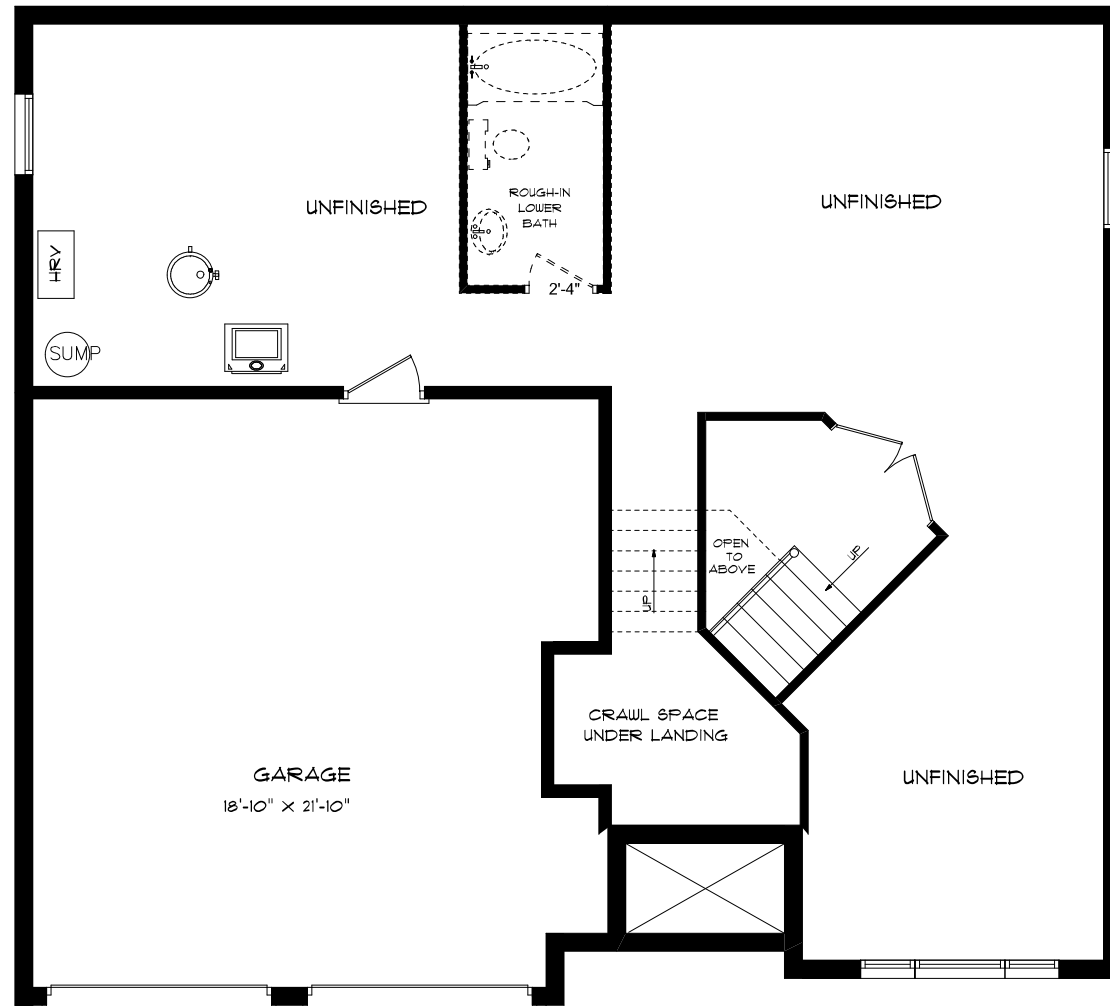
REAR ELEVATION

SEELEY
HOMES
CUSTOM HOMES BY SEELEY

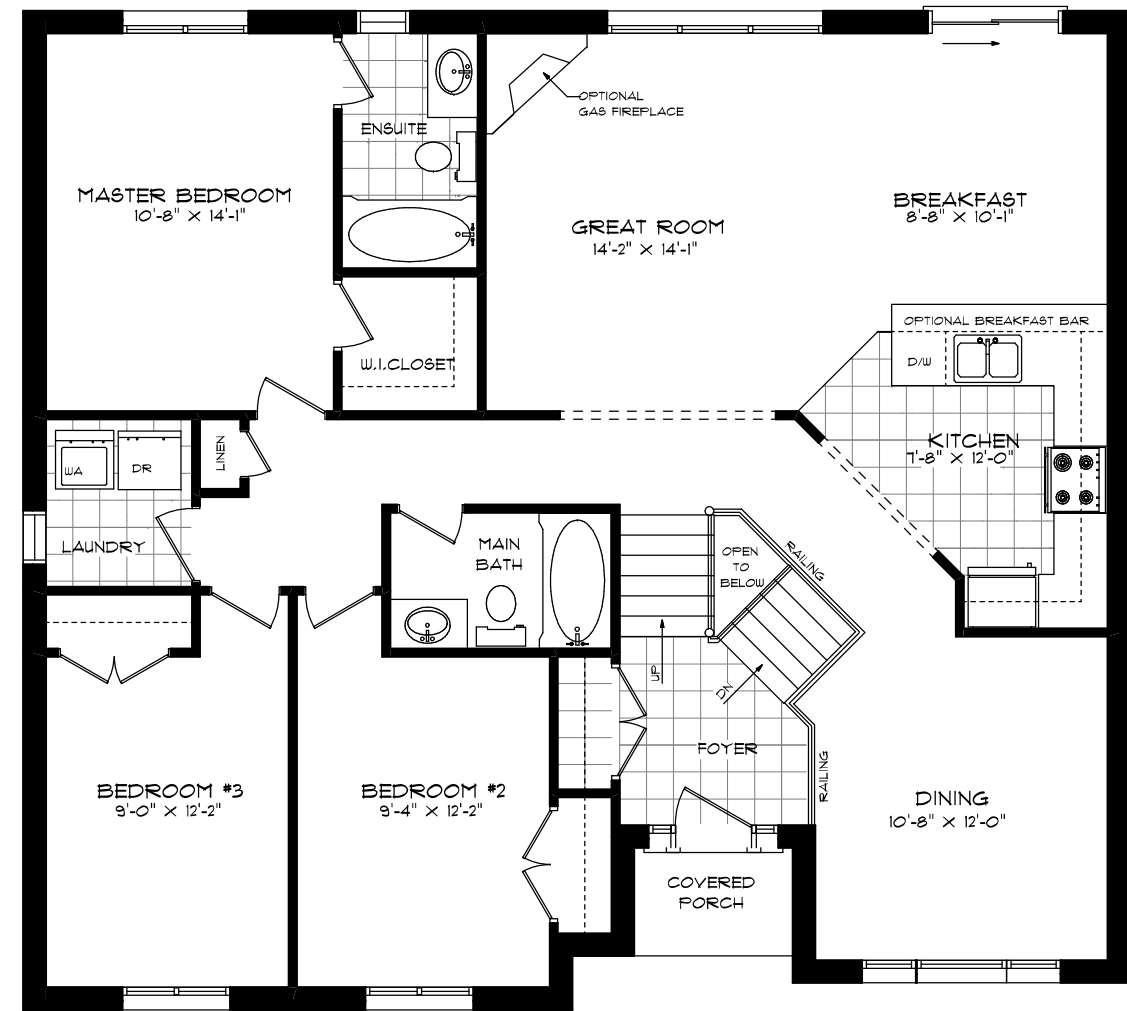
"THE RICHMOND III"

IN VICTORIA WOODS

1462 SQ.FT.



FOUNDATION PLAN



FIRST FLOOR PLAN