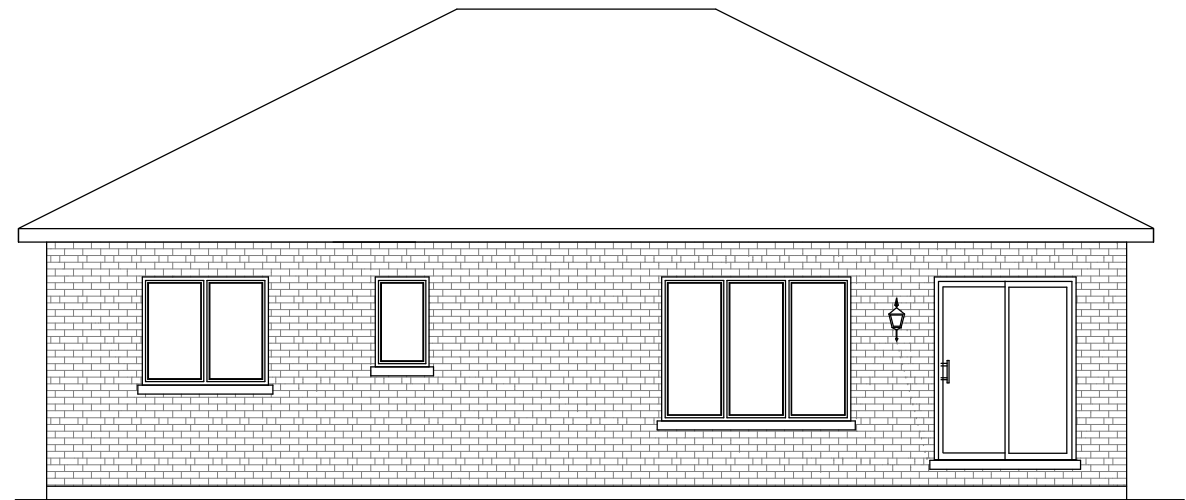


"THE PORTLAND III"
IN VICTORIA WOODS
1329 SQ.FT.



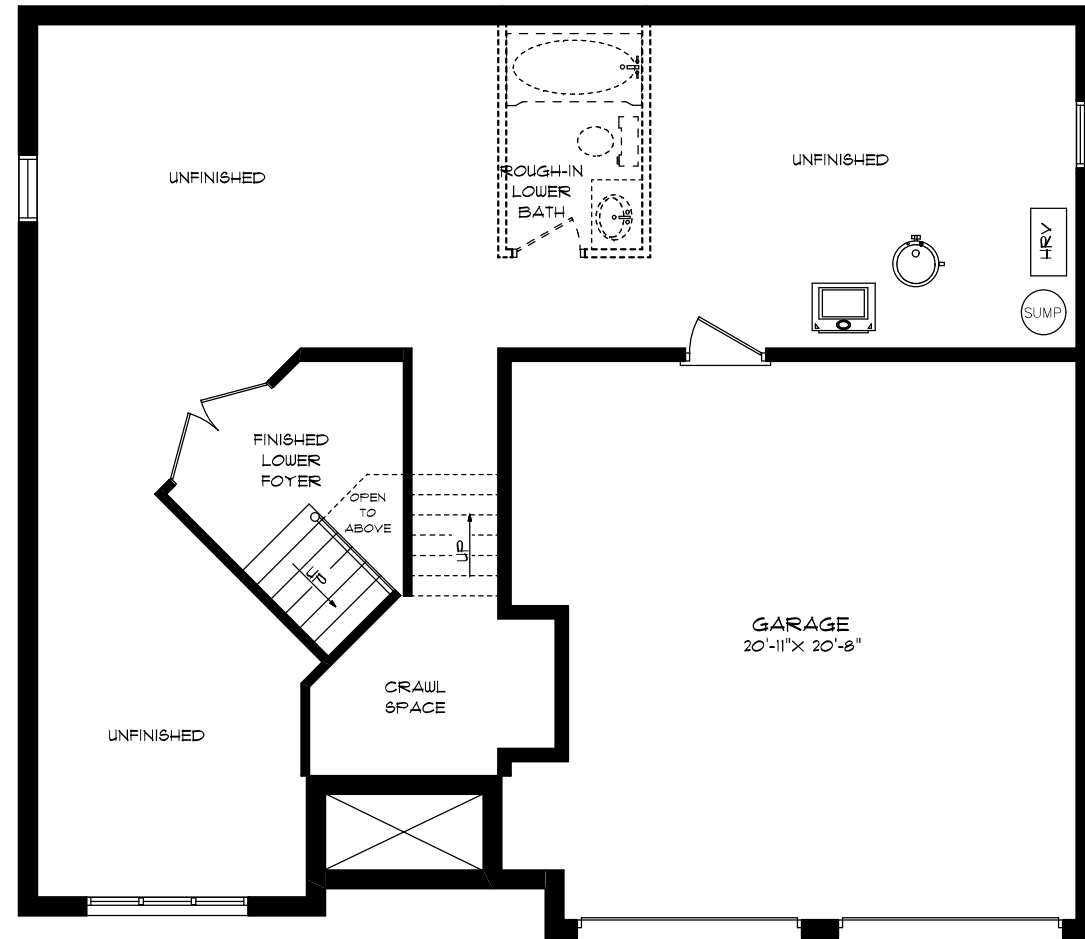
FRONT ELEVATION



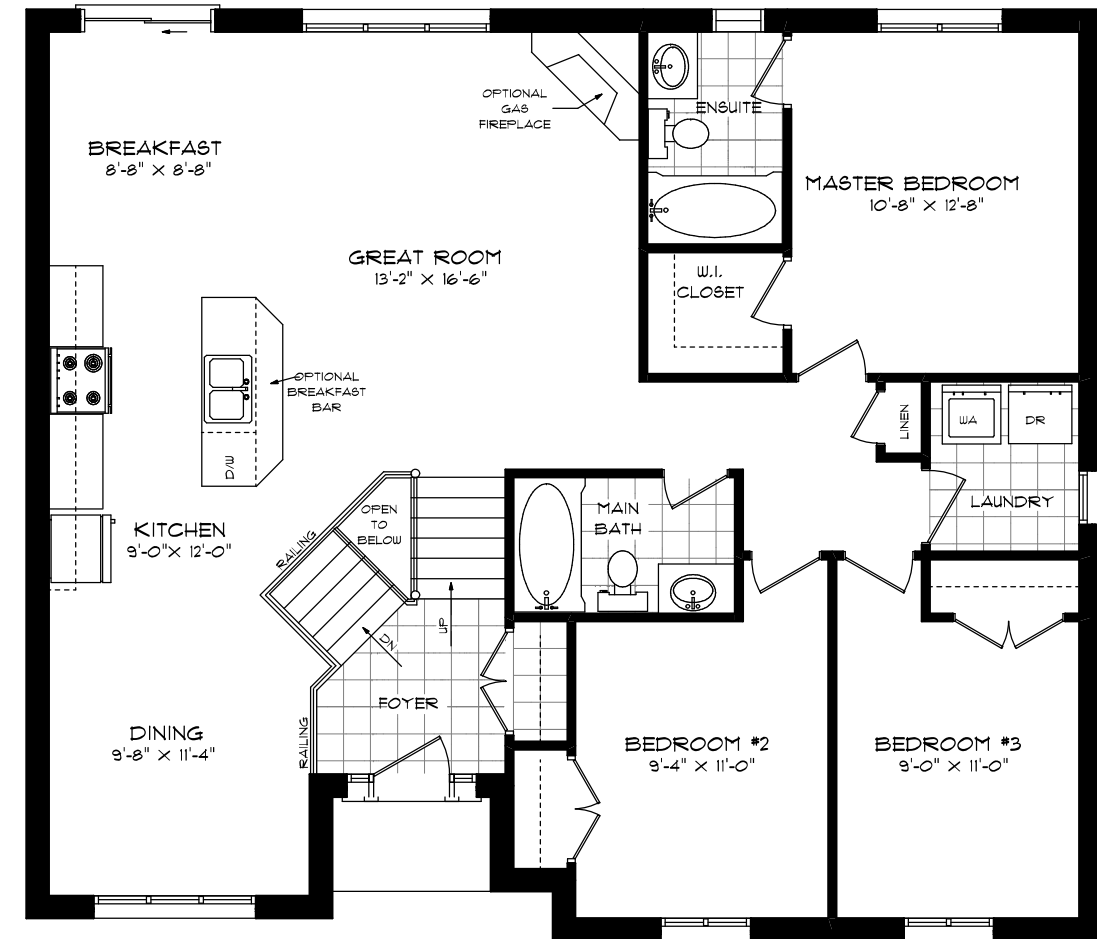
REAR ELEVATION

**SEELEY
HOMES**
CUSTOM HOMES BY SEELEY

"THE PORTLAND III" IN VICTORIA WOODS 1329 SQ.FT.



FOUNDATION PLAN



FIRST FLOOR PLAN