

"THE NOTTINGHAM III"
IN VICTORIA WOODS
1260 SQ.FT.



FRONT ELEVATION



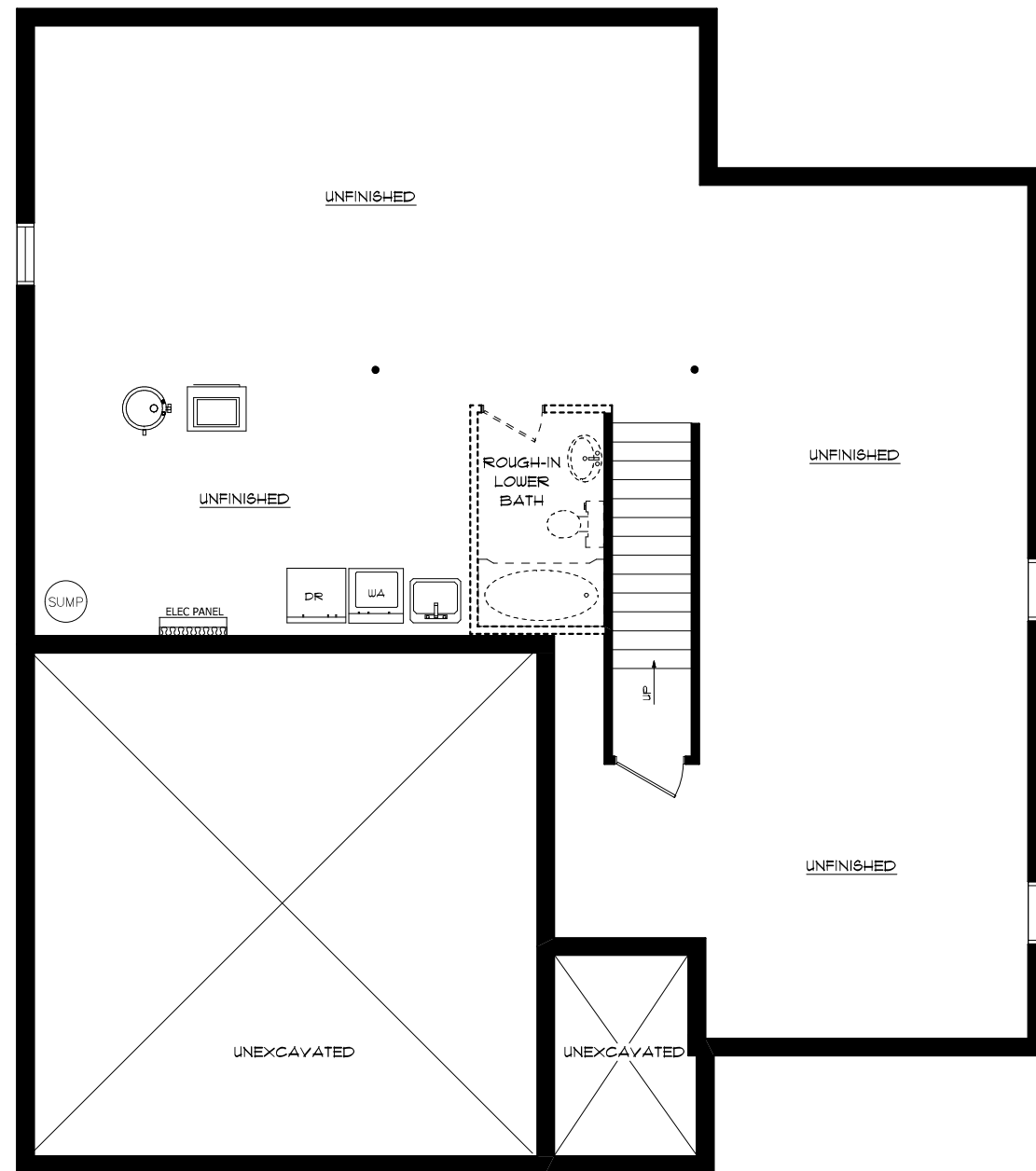
REAR ELEVATION

SEELEY
HOMES
CUSTOM HOMES BY SEELEY

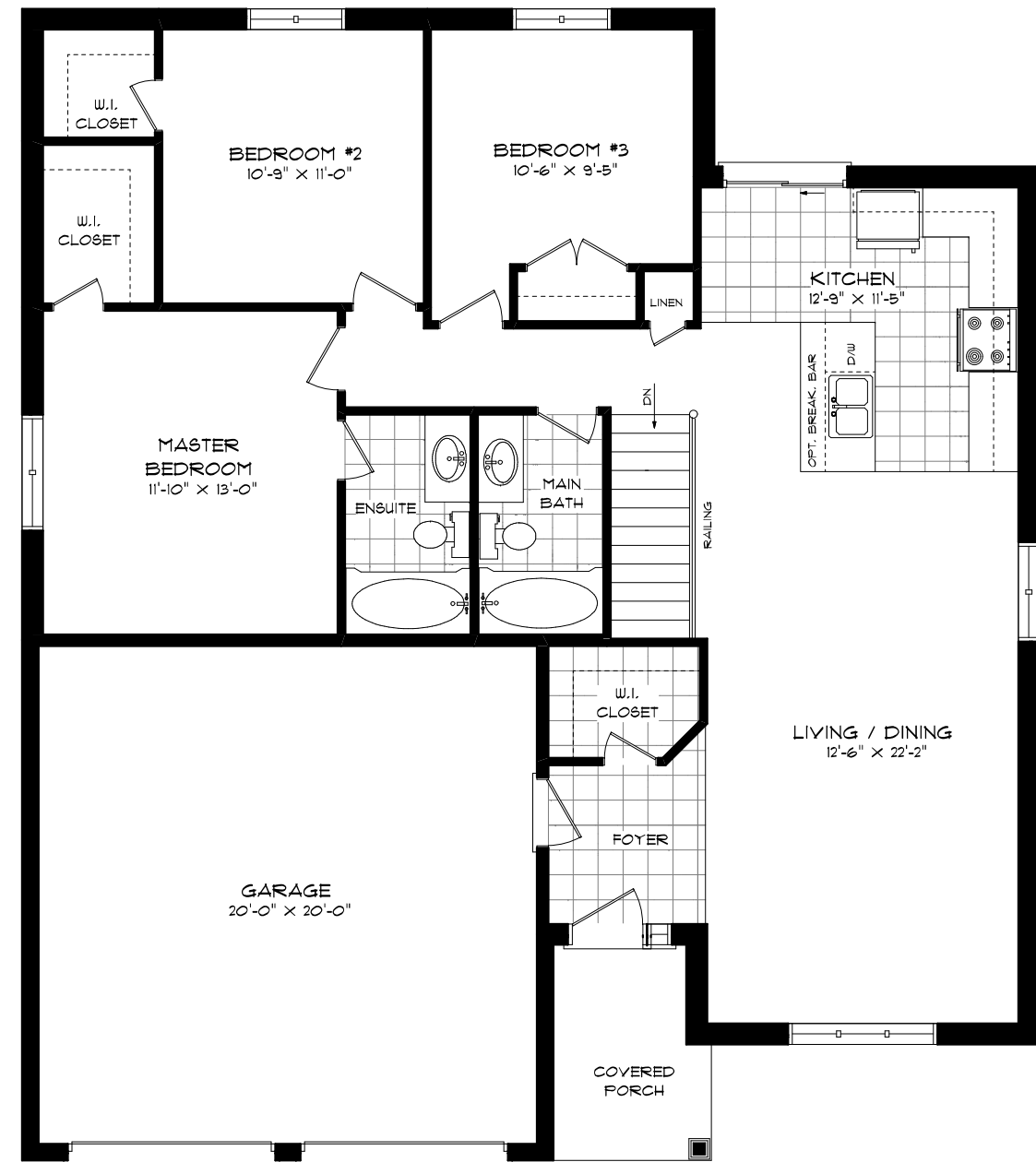
"THE NOTTINGHAM III"

IN VICTORIA WOODS

1260 SQ.FT.



FOUNDATION PLAN



FIRST FLOOR PLAN