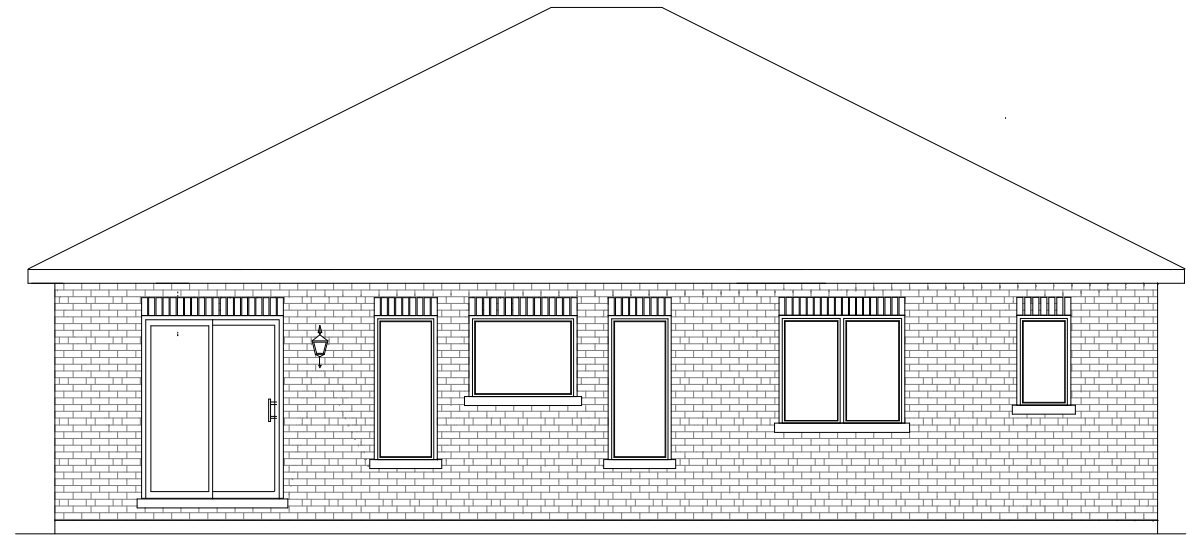


"THE KENSINGTON III"
IN VICTORIA WOODS
1267 SQ.FT.



FRONT ELEVATION



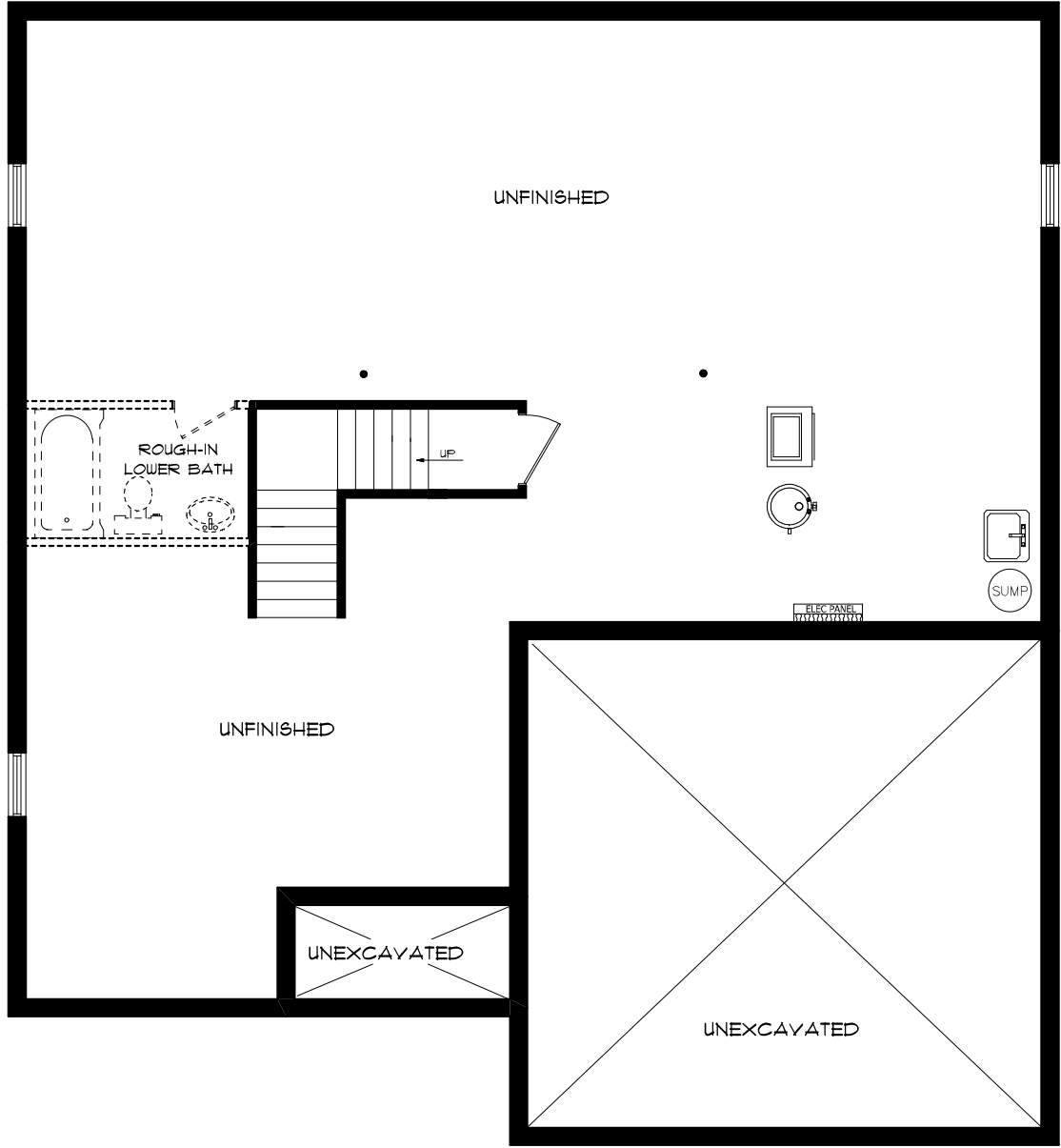
REAR ELEVATION

SEELEY
HOMES
CUSTOM HOMES BY SEELEY

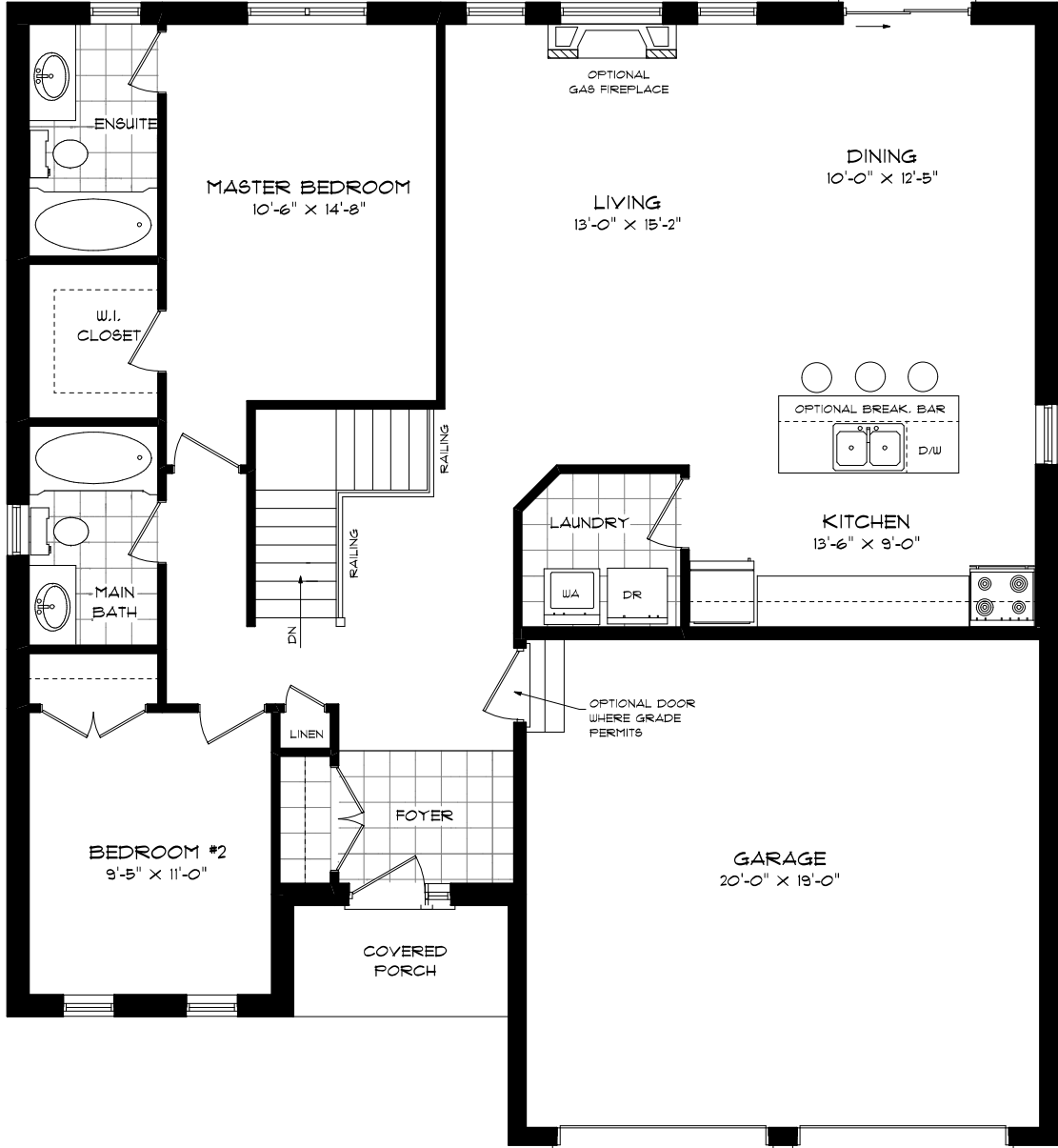
"THE KENSINGTON III"

IN VICTORIA WOODS

1267 SQ.FT.



FOUNDATION PLAN



FIRST FLOOR PLAN