

"THE BERKELY III
IN VICTORIA WOODS
1566 SQ.FT.



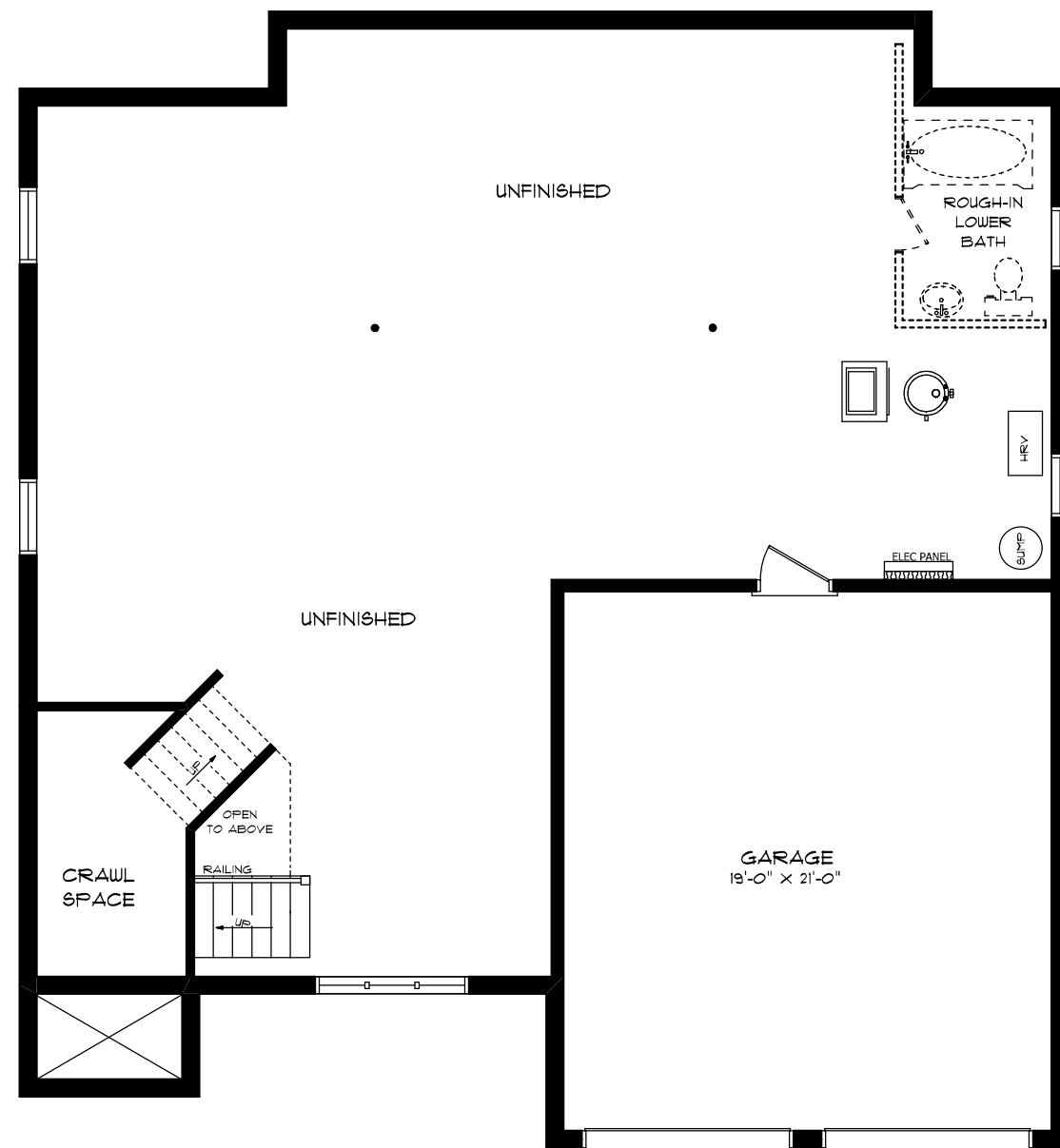
FRONT ELEVATION



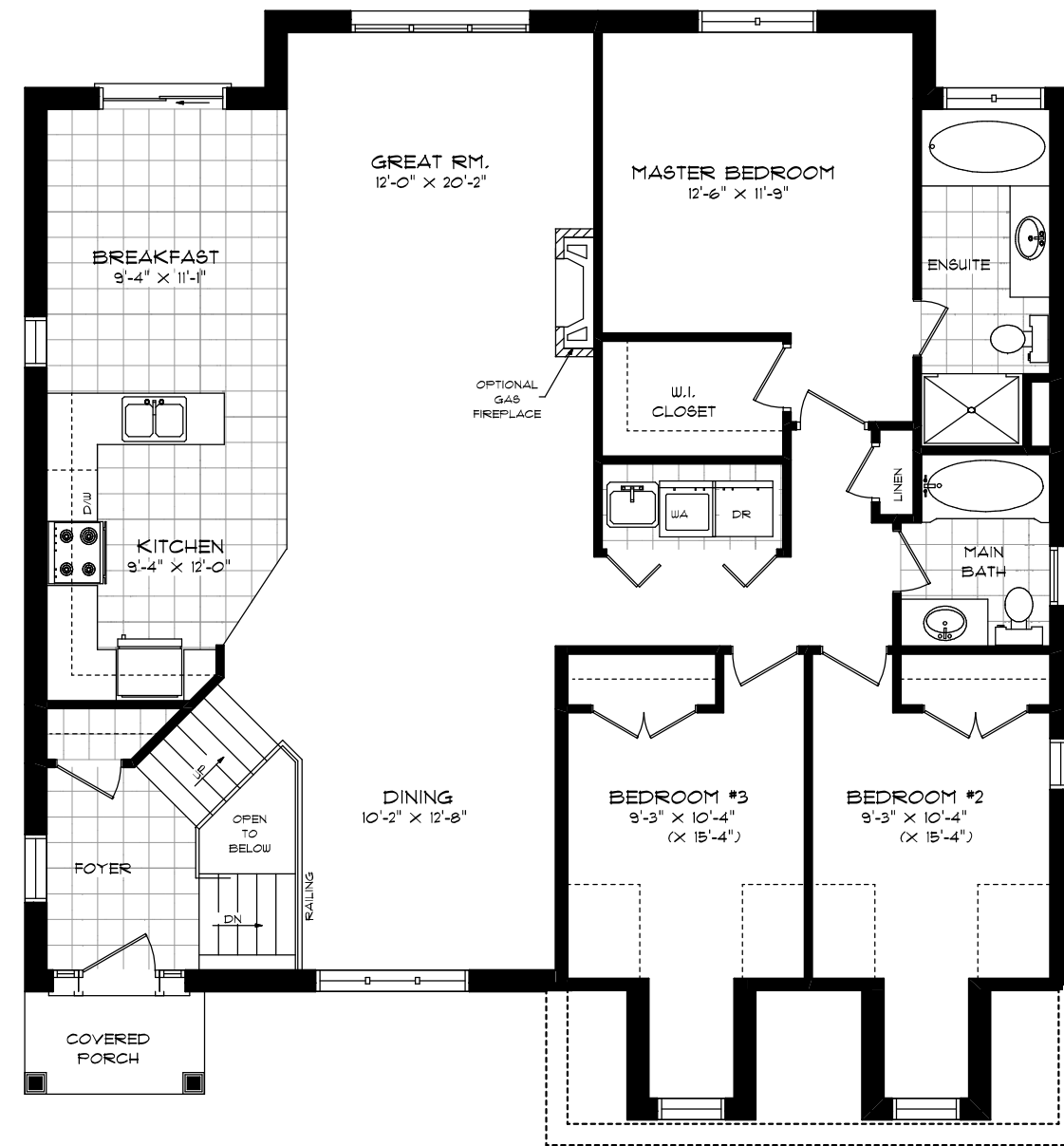
REAR ELEVATION

SEELEY
HOMES
CUSTOM HOMES BY SEELEY

"THE BERKELY III IN VICTORIA WOODS 1566 SQ.FT.



FOUNDATION PLAN



FIRST FLOOR PLAN