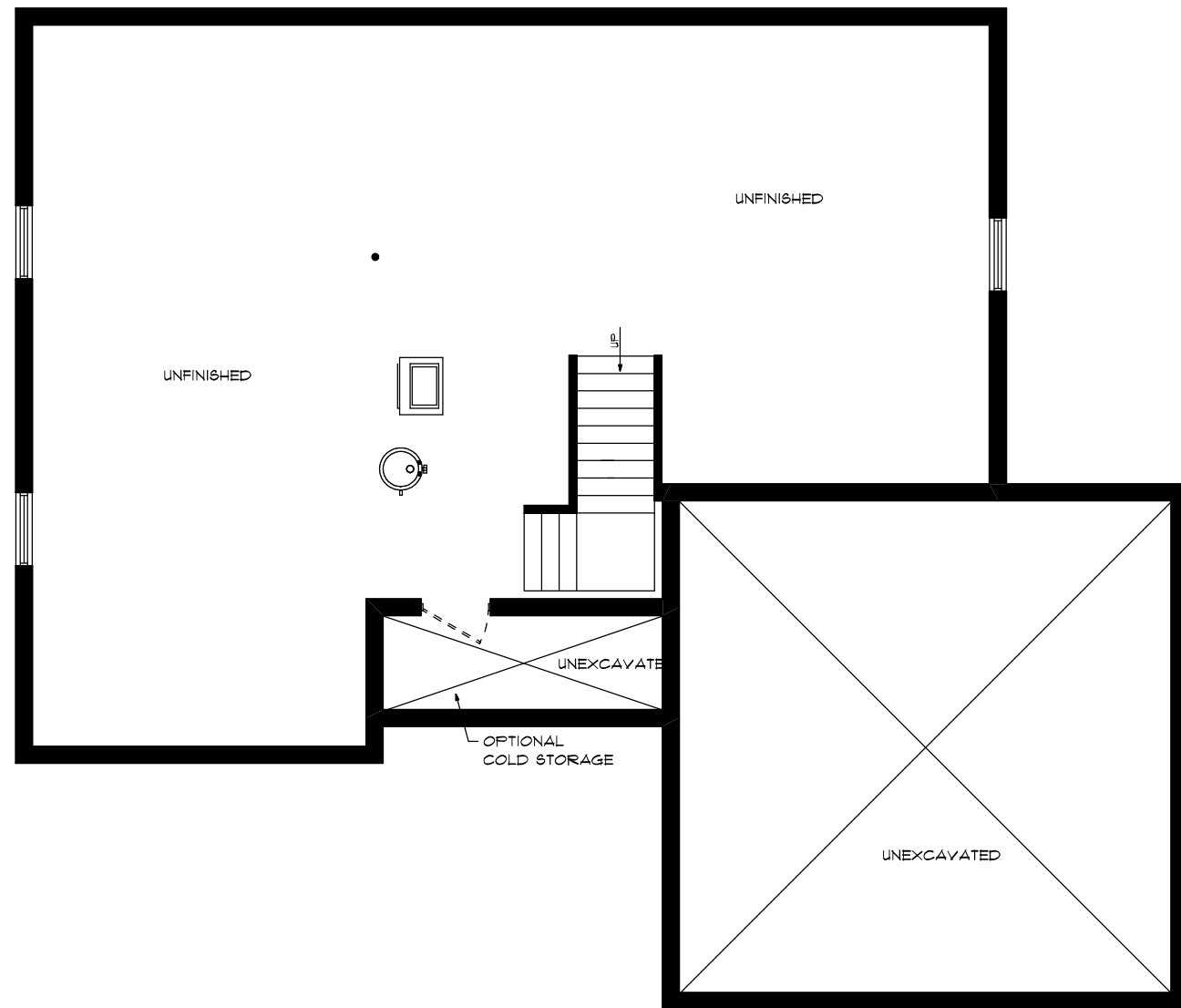
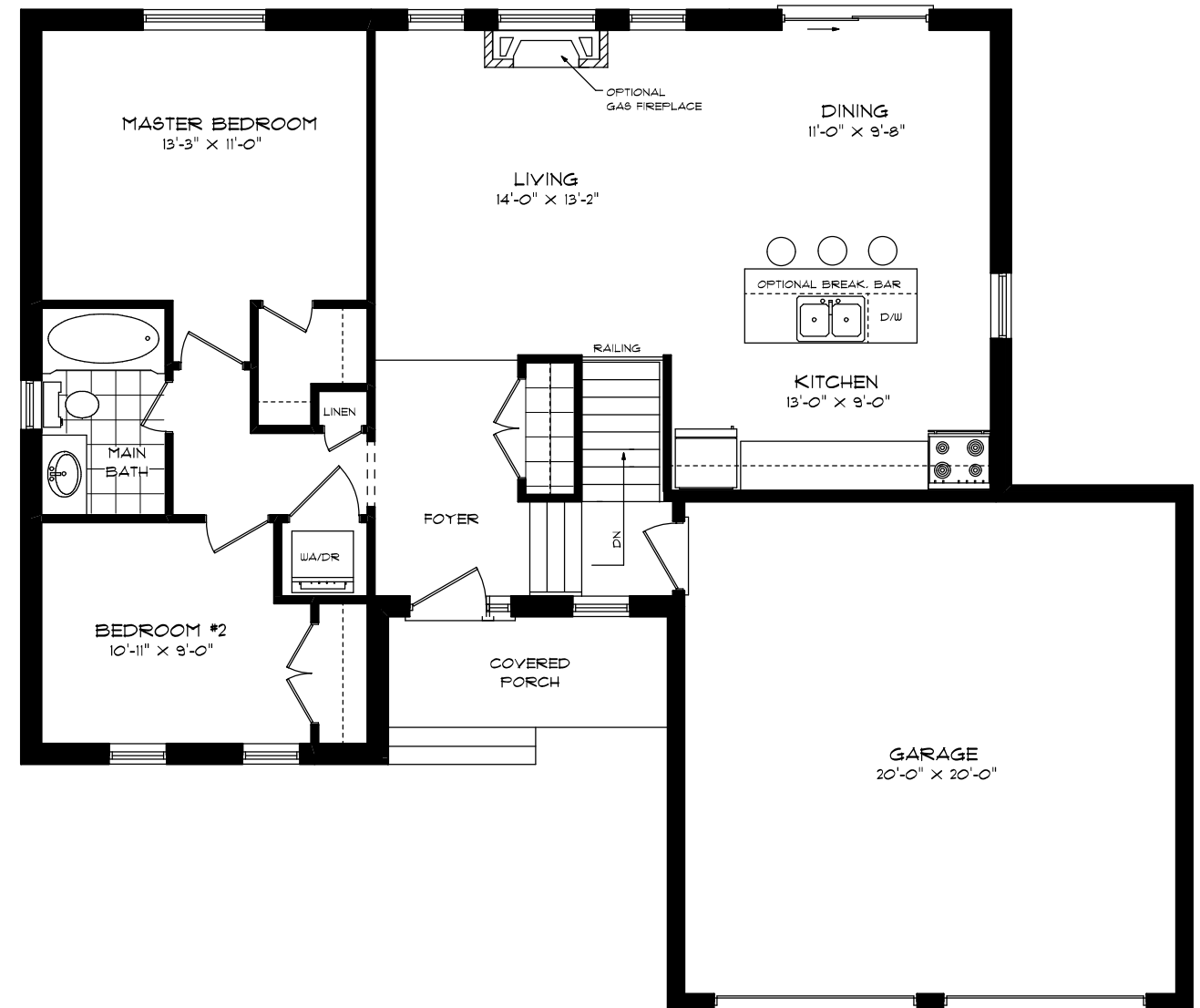


# "THE TRAFALGER II"

IN VICTORIA HARBOUR  
1020 SQ.FT.



FOUNDATION PLAN

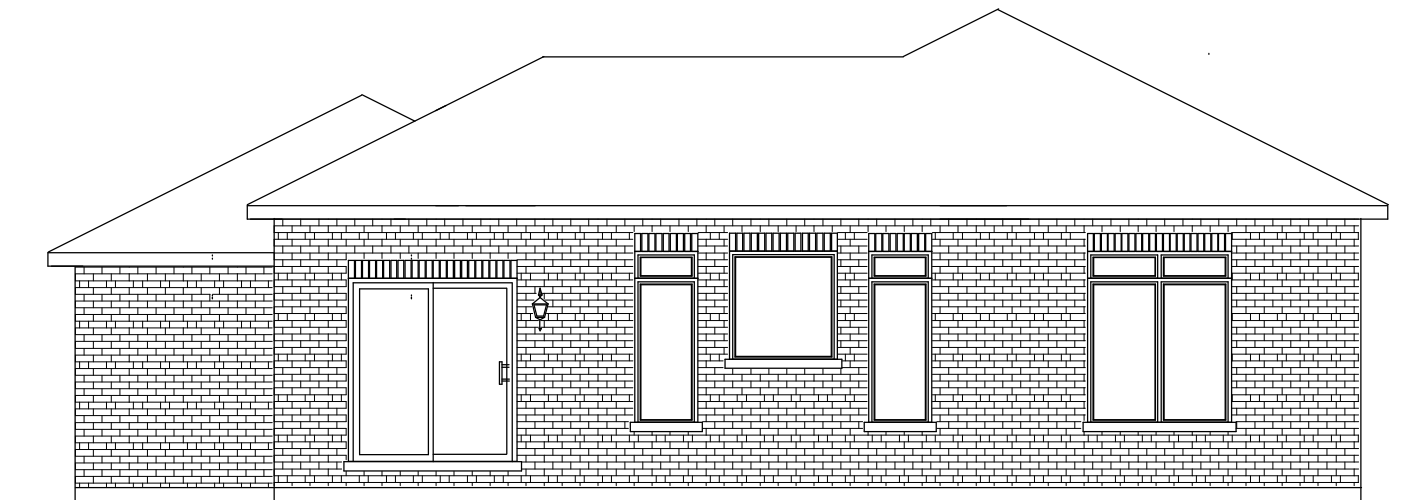


FIRST FLOOR PLAN

"THE TRAFALGER II"  
IN VICTORIA HARBOUR  
1020 SQ.FT.



FRONT ELEVATION



REAR ELEVATION

**SEELEY**  
**HOMES**  
CUSTOM HOMES BY SEELEY