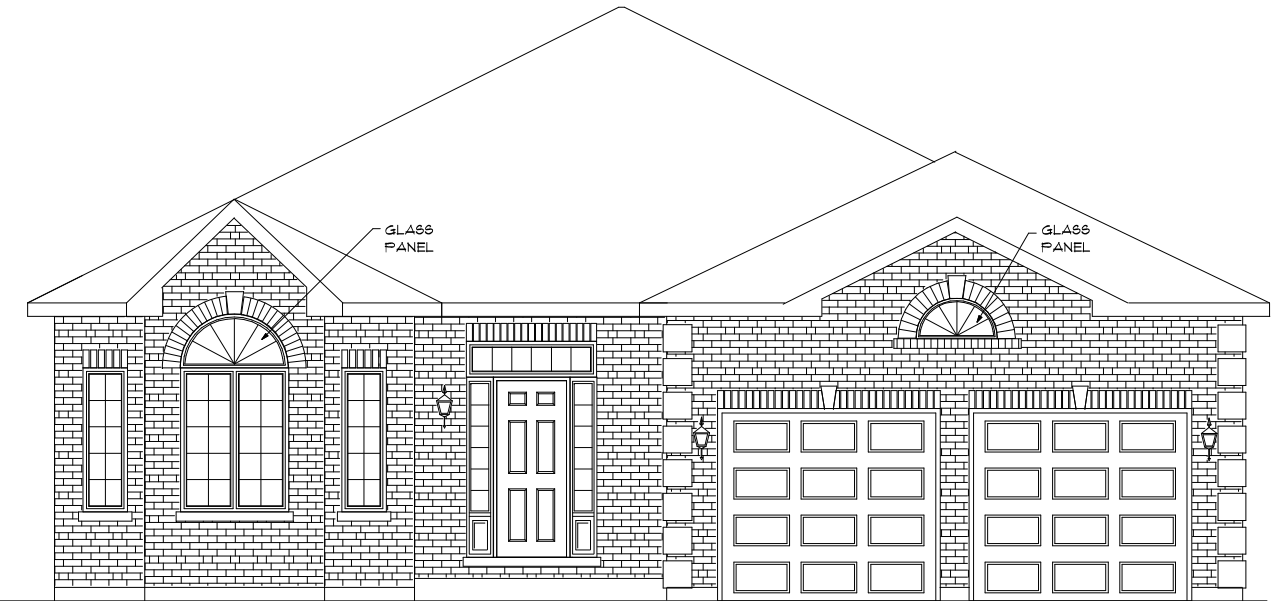
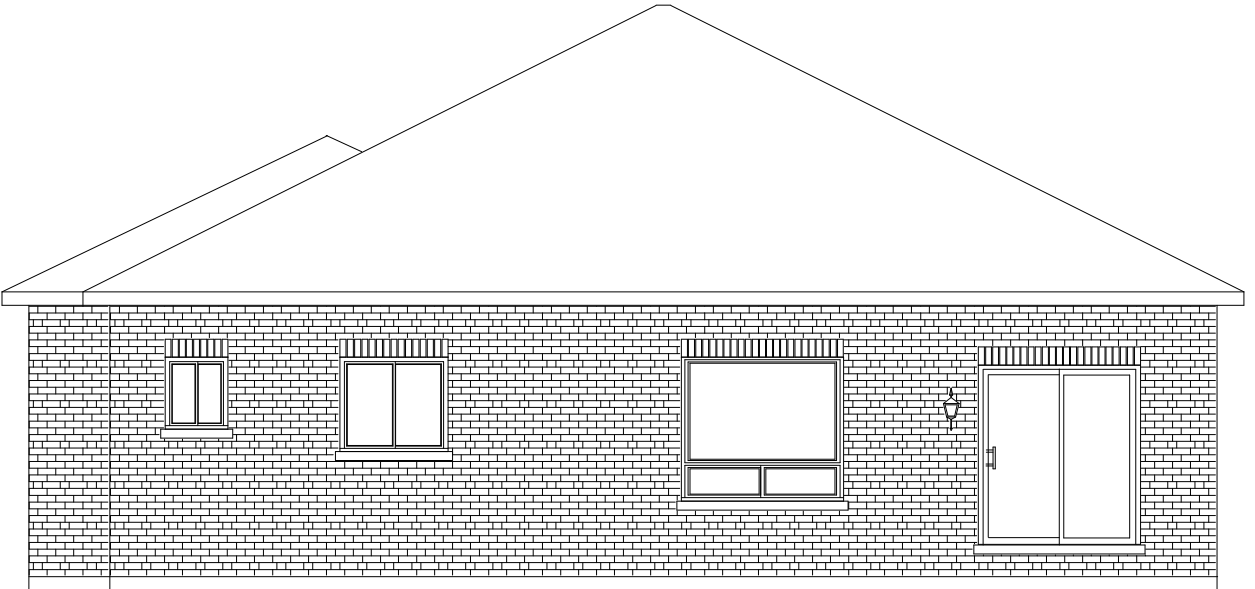


"THE OXFORD"
IN VICTORIA HARBOUR
1708 SQ.FT.



FRONT ELEVATION

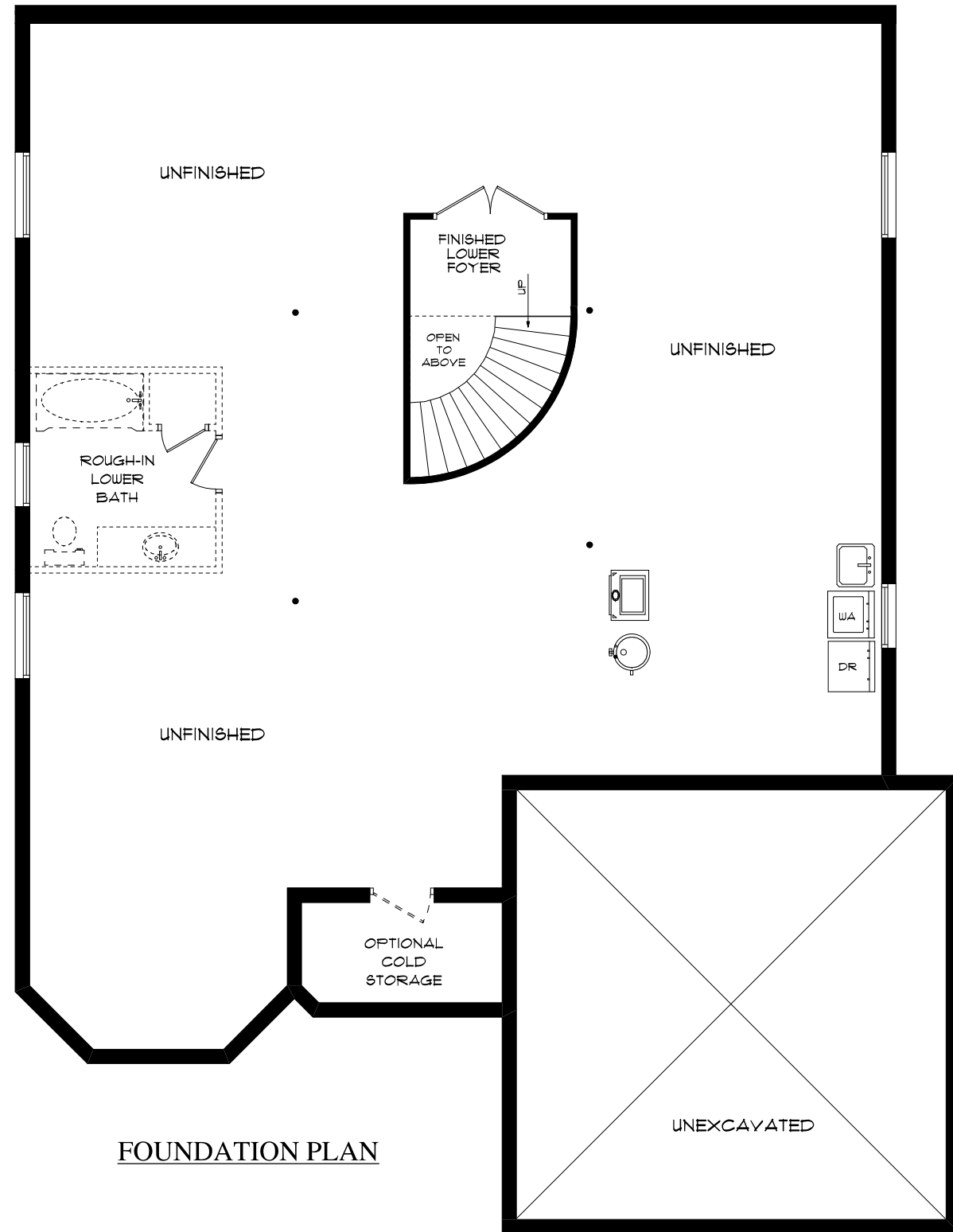


REAR ELEVATION

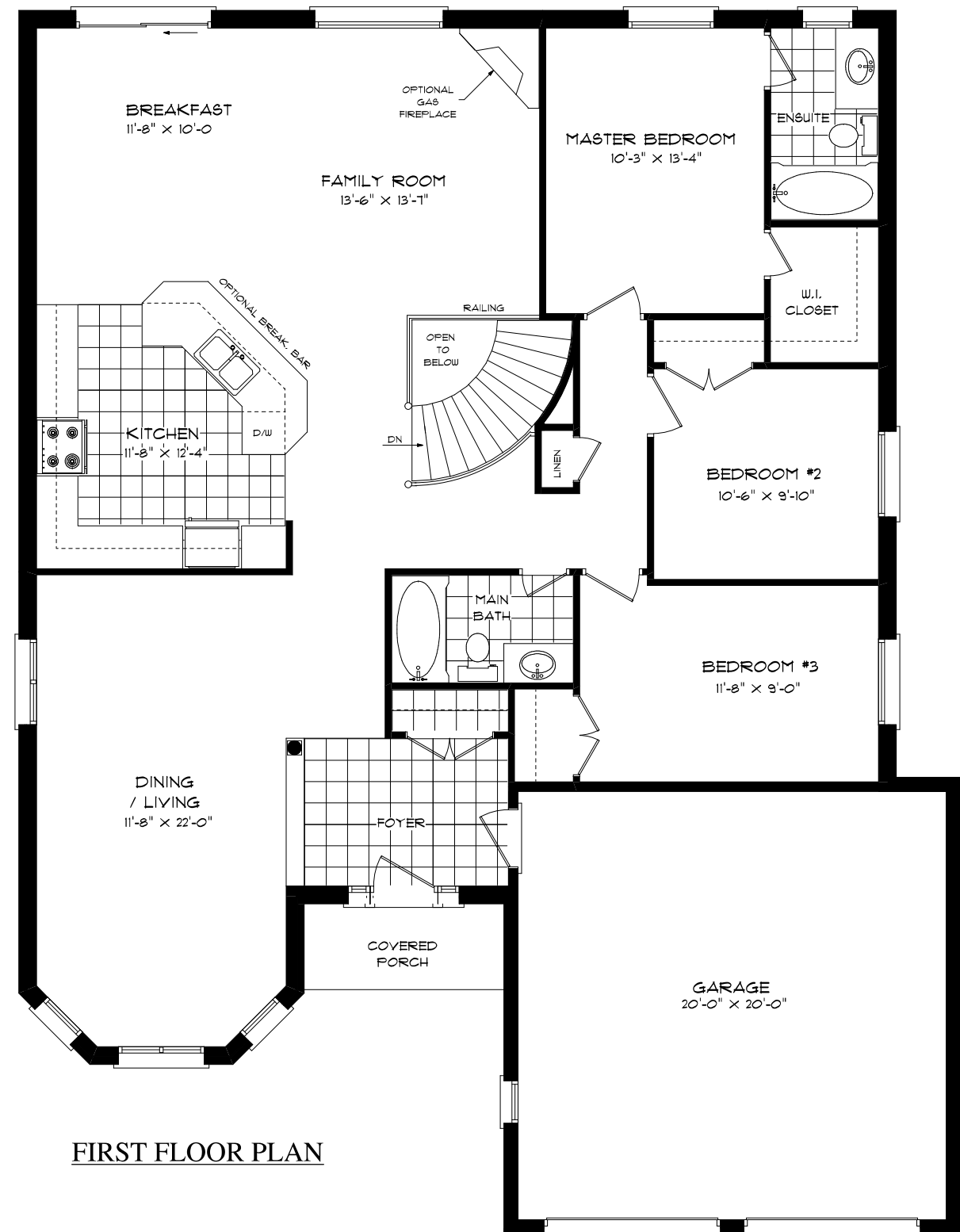
**SEELEY
HOMES**
CUSTOM HOMES BY SEELEY

"THE OXFORD"

IN VICTORIA HARBOUR
1708 SQ.FT.



FOUNDATION PLAN



FIRST FLOOR PLAN