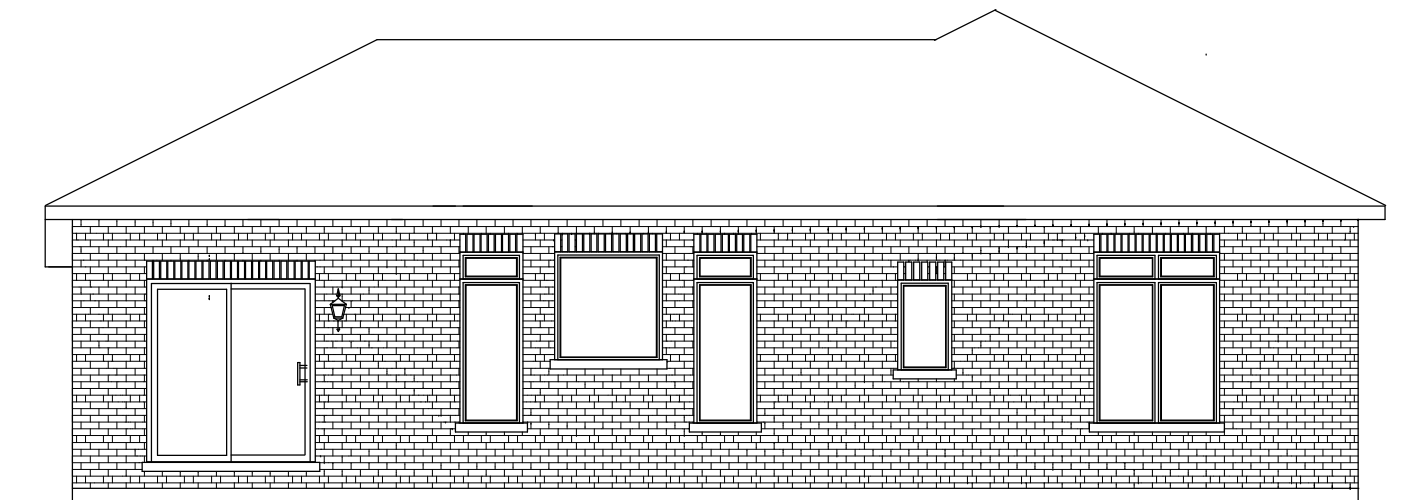


"THE KENSINGTON"
IN VICTORIA HARBOUR
1287 SQ.FT.



FRONT ELEVATION

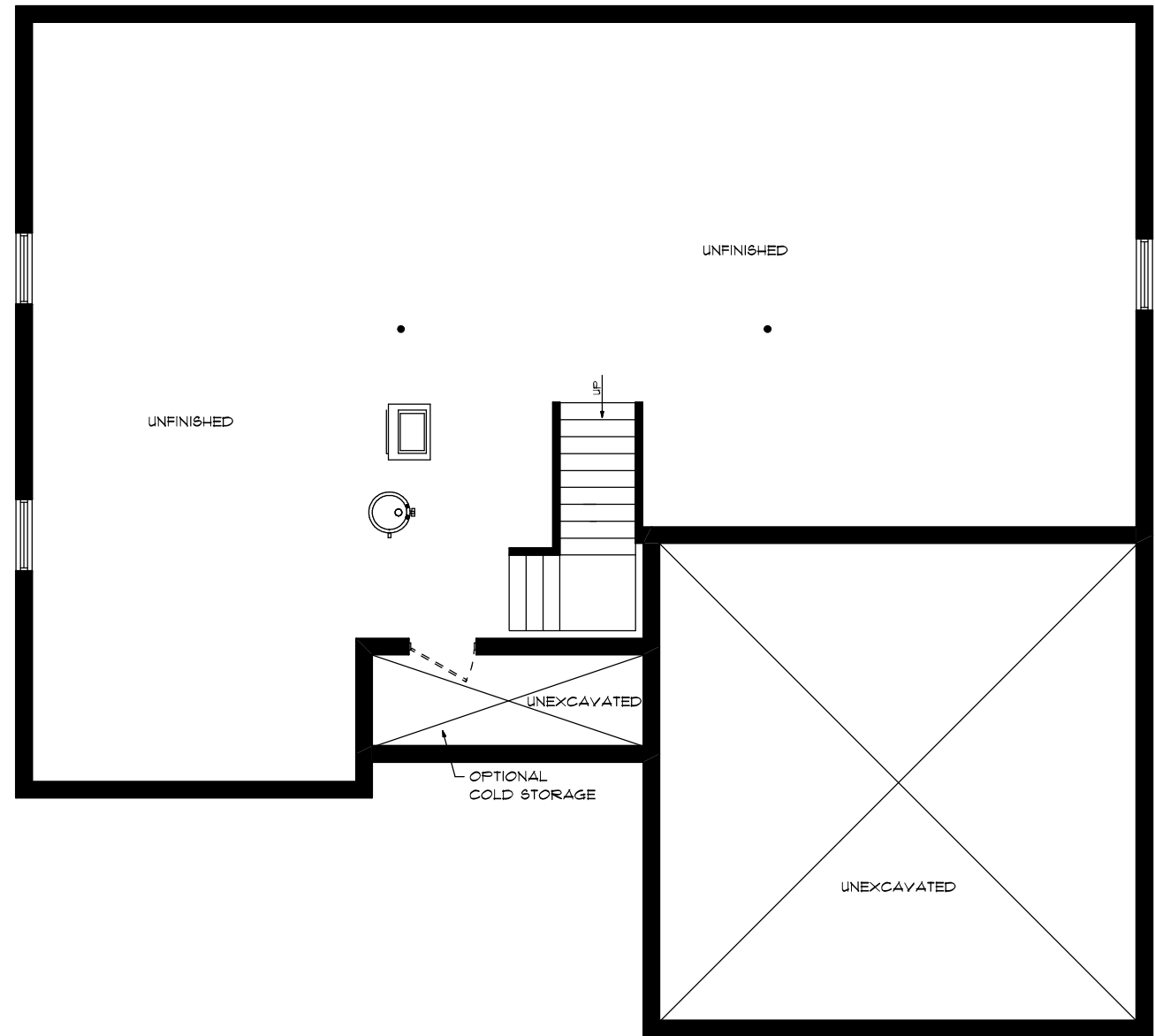


REAR ELEVATION

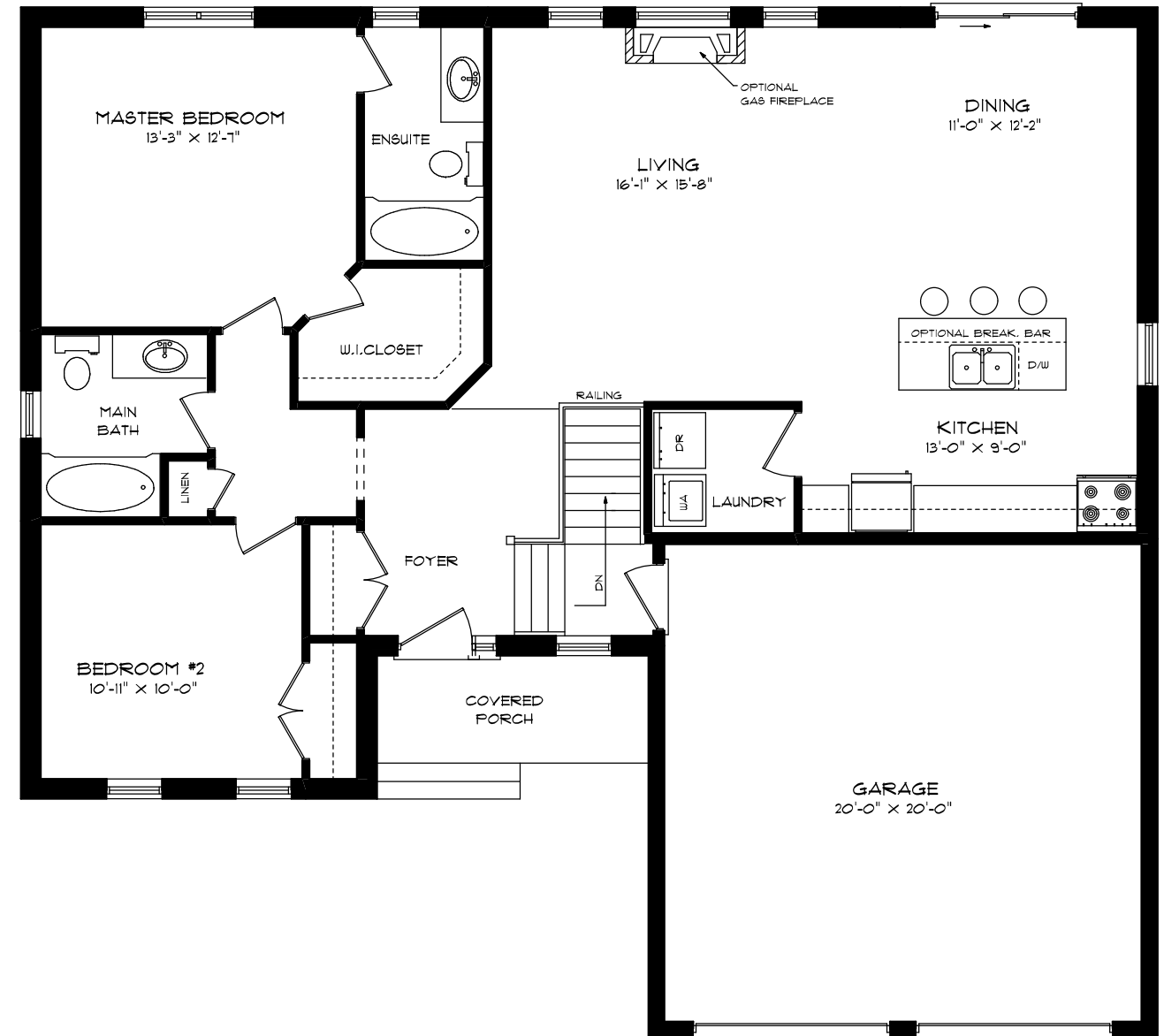
SEELEY
HOMES
CUSTOM HOMES BY SEELEY

"THE KENSINGTON"

IN VICTORIA HARBOUR
1287 SQ.FT.



FOUNDATION PLAN



FIRST FLOOR PLAN