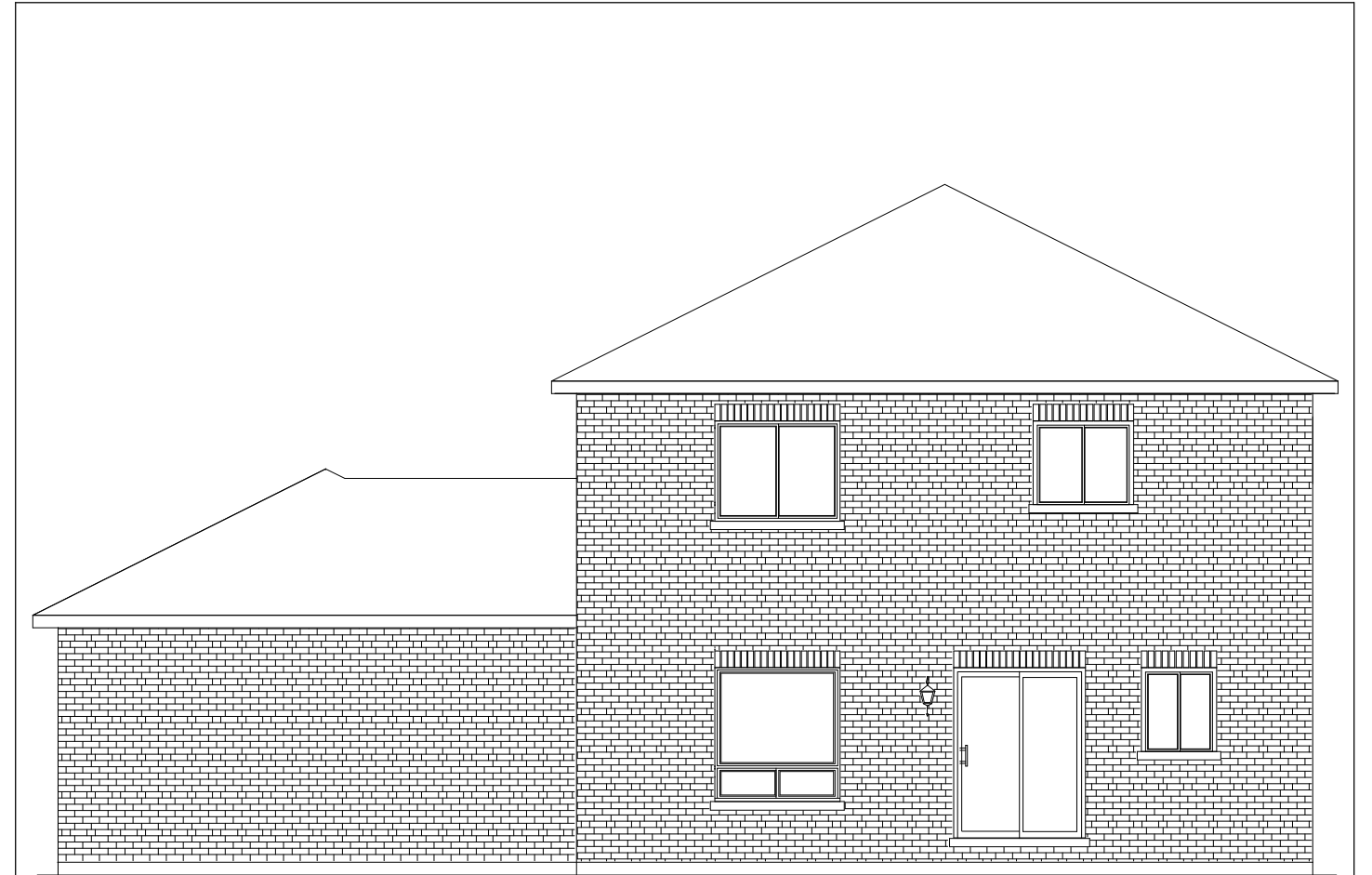


"THE BERWICK"  
IN VICTORIA HARBOUR  
2108 SQ.FT.



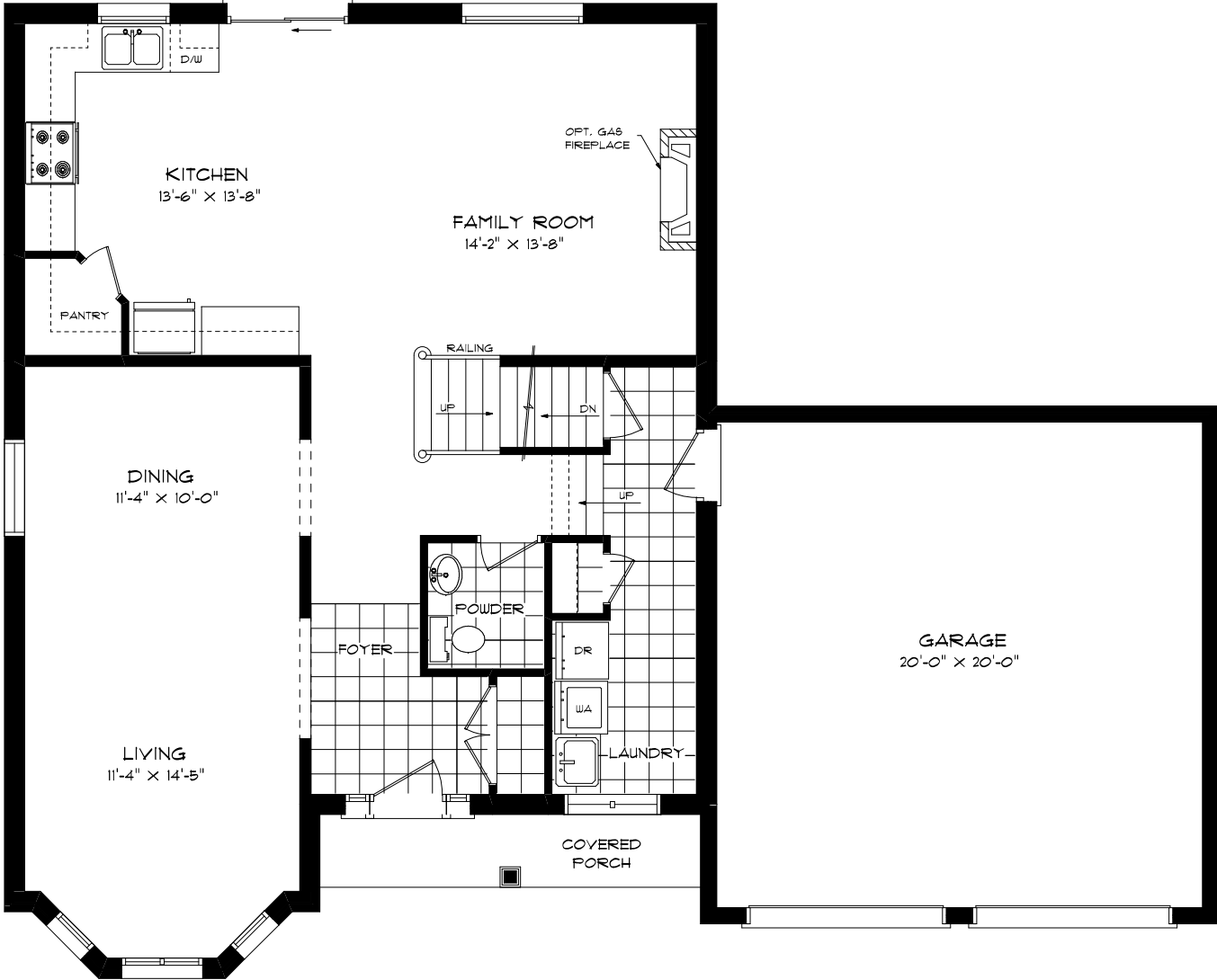
FRONT ELEVATION



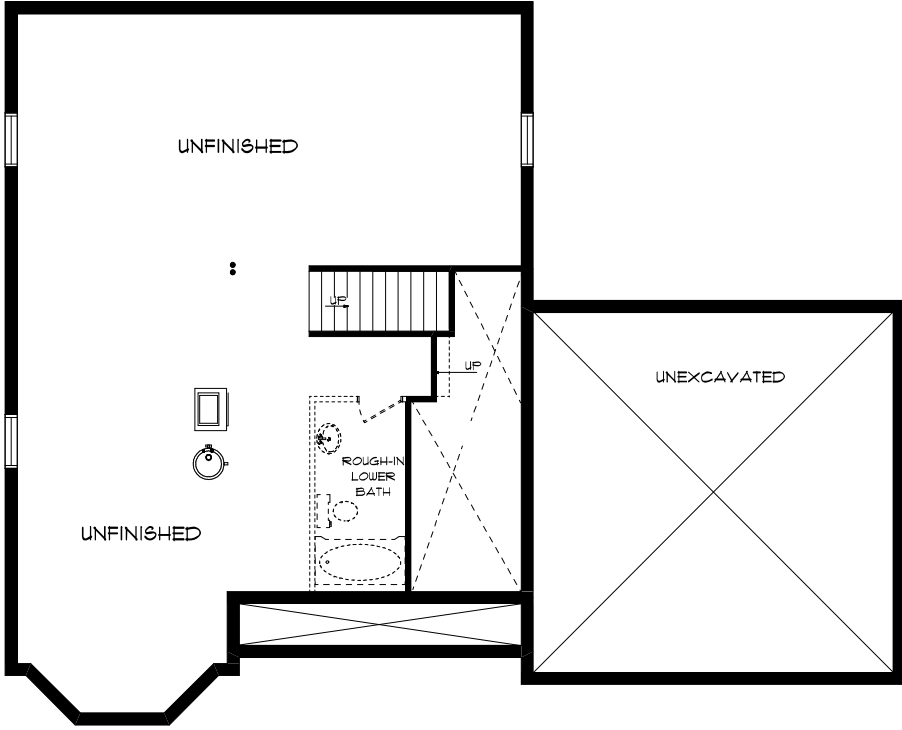
REAR ELEVATION

# "THE BERWICK"

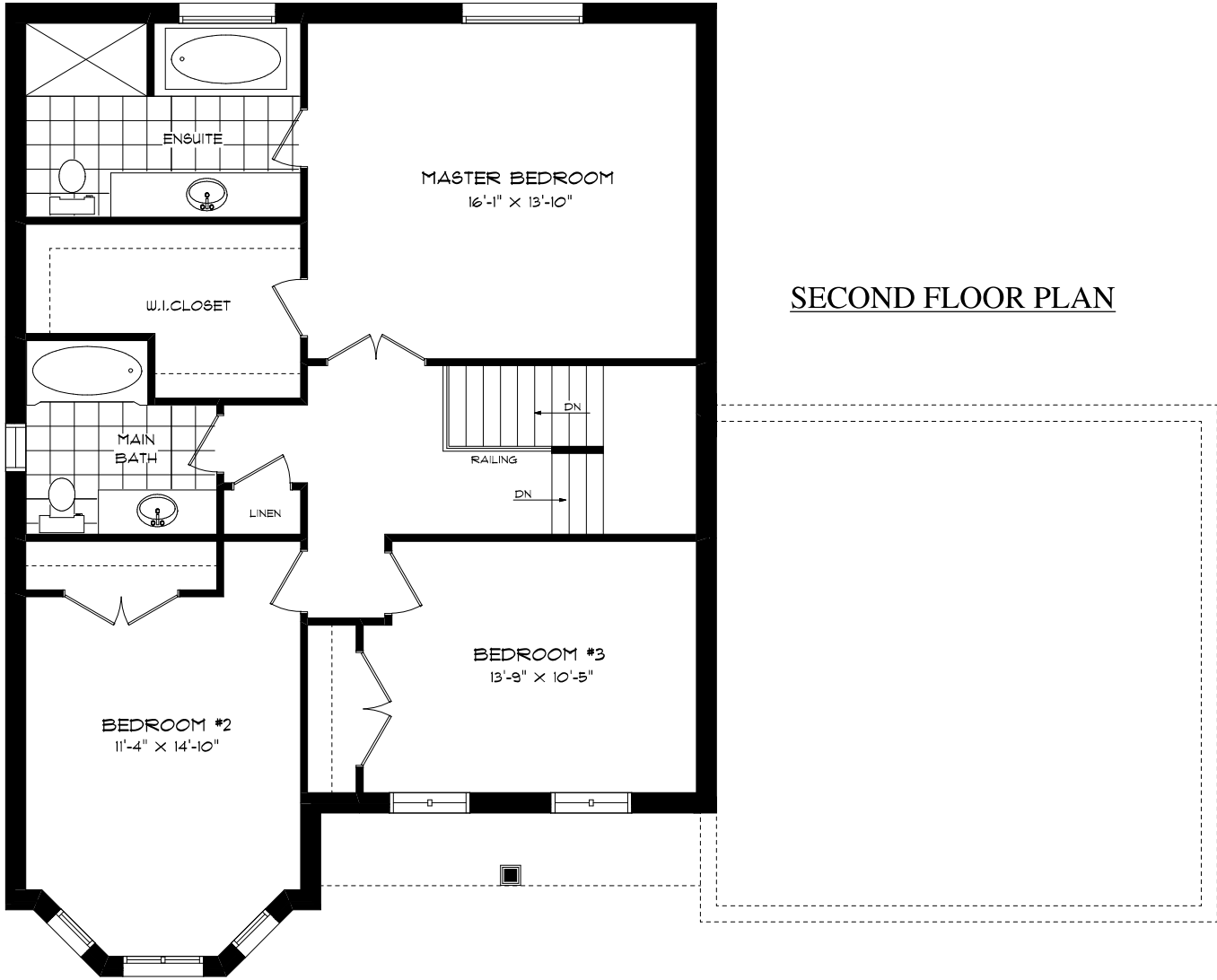
IN VICTORIA HARBOUR  
2108 SQ.FT.



FIRST FLOOR PLAN



FOUNDATION PLAN



SECOND FLOOR PLAN